



COMPANY PROFILE 2026

# PRECISION MACHINING SOLUTIONS IN VIETNAM

ShinTech Precision Vietnam is a reliable bridge between international customers and trusted manufacturing partners in Vietnam.

**7+**

Years of experience

**CNC**

Precision machining

**QC**

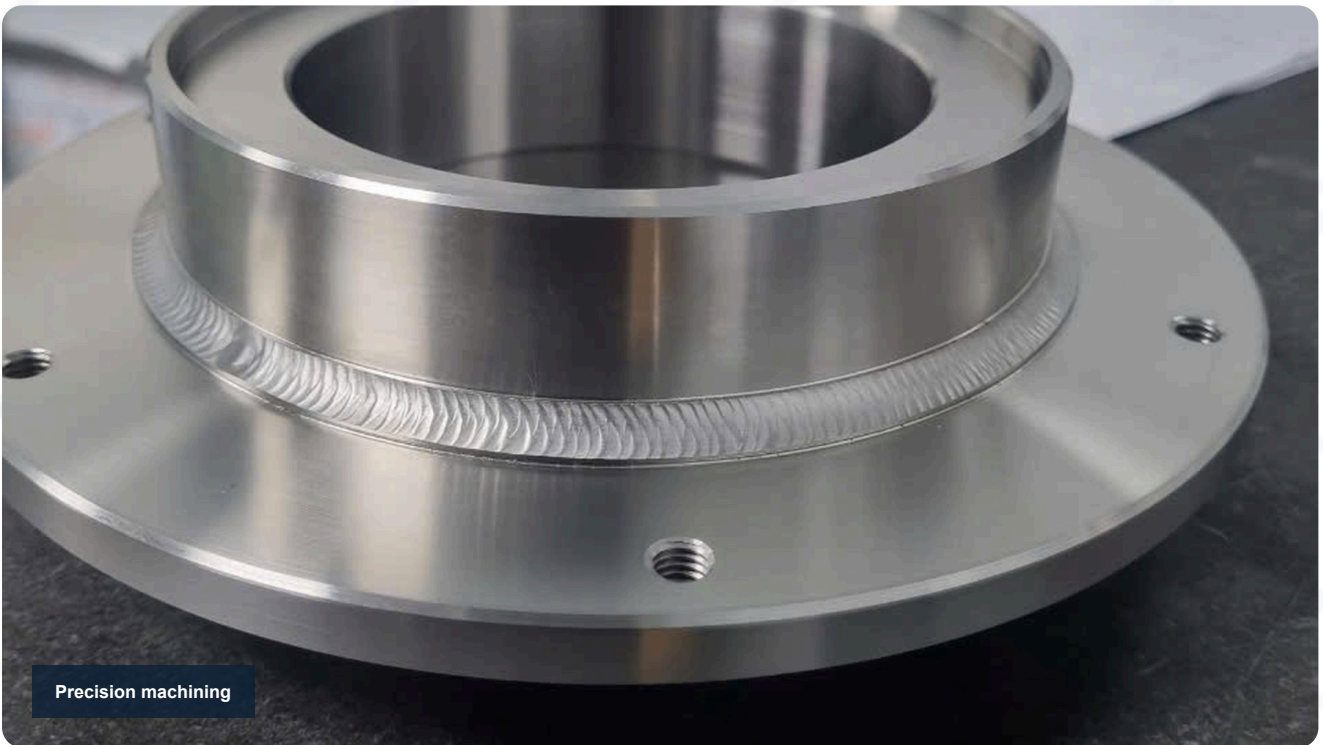
Quality control



02 / OVERVIEW

# A PRECISION MANUFACTURING BRIDGE IN VIETNAM

ShinTech Precision Vietnam provides precision machining solutions and manufacturing coordination in Vietnam. We act as a single point of contact from quotation and production to quality inspection and delivery.



7+

Years of experience

CNC

Precision machining

QC

Quality control  
Company overview

12

Core equipment photos

# MANUFACTURING CAPABILITY BASED ON TECHNICAL DRAWINGS

## CNC machining

High-precision CNC turning and milling for SUS304, SS400, aluminum, brass and other industrial materials.

## Welding & fabrication

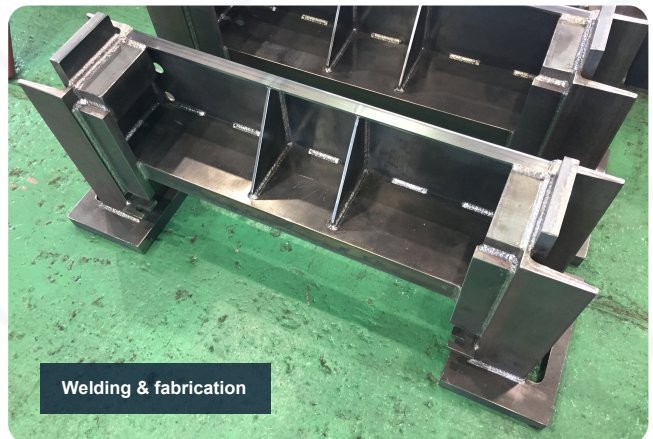
Machine frames, SS400 welded bases, polished #400 stainless assemblies and post-weld finishing to technical requirements.

## Bending & laser cutting

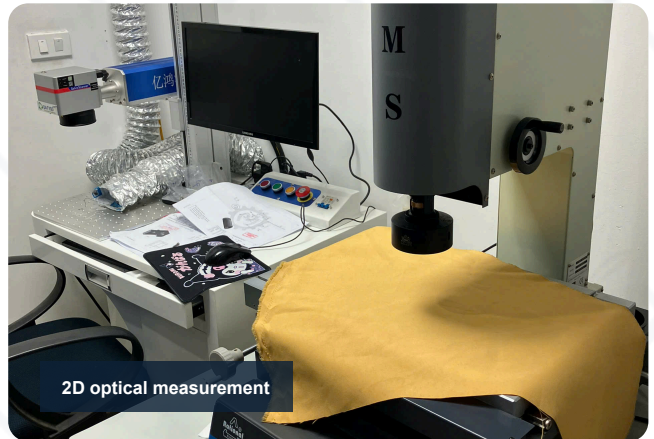
Laser cutting and sheet-metal bending using laser machines, TruBend 5085 and FBD 1253NT.

## Quality inspection

Dimension inspection using 3D CMM and 2D optical dimension measuring machine before delivery.



# CORE EQUIPMENT SYSTEM FOR MANUFACTURING



## CNC / turning / milling

Machining centers and small lathe machines support precision cutting operations.

## Laser / bending

Laser cutting and press brake bending support sheet-metal production.

## Welding

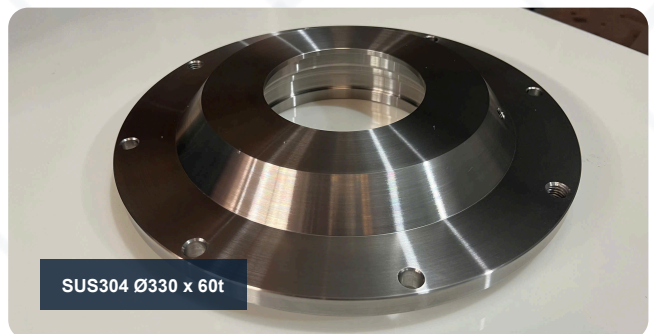
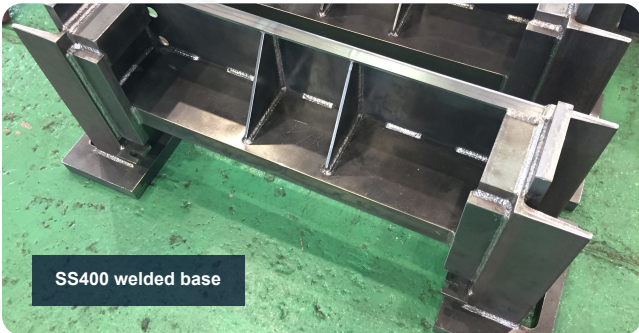
TIG welding and fabrication capability for stainless and SS400 assemblies.

## Inspection

3D CMM and 2D optical measuring equipment are used for dimensional checks.  
Machinery and equipment

# SELECTED REAL MANUFACTURING EXAMPLES

Representative products show CNC machining, welded fabrication, polished #400 stainless steel finishing and surface treatment capability.



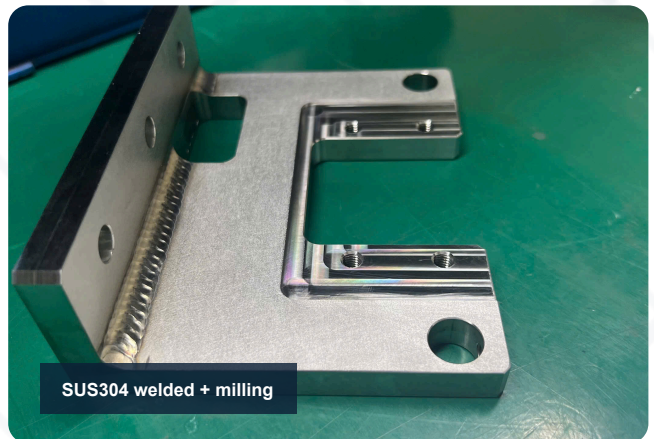
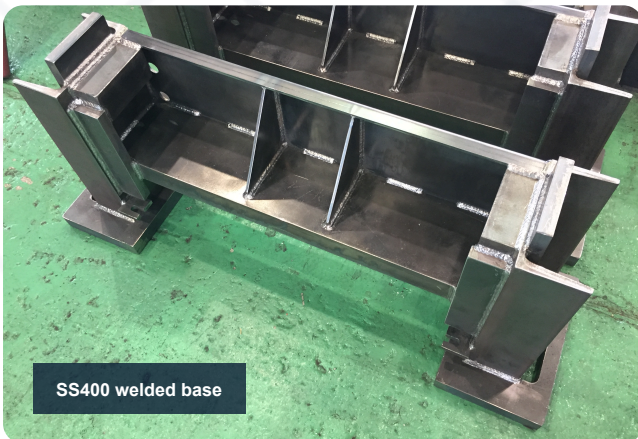
# PRECISION TURNED PARTS, FLANGES, SHAFTS AND RINGS



SUS304 pulley / turned part

We machine shafts, rings, pulleys, flanges and other turned components according to technical drawings, with focus on machined surfaces, concentricity, dimensions and assembly requirements.

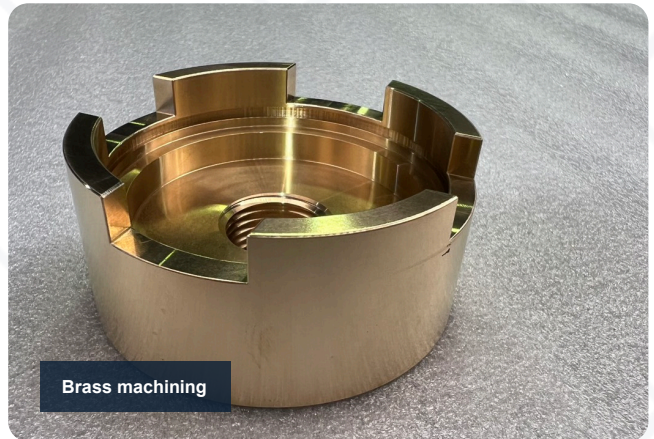
# POLISHED #400 STAINLESS WELDING AND SS400 STRUCTURES



We support polished stainless welded assemblies, SS400 welded bases, frames and structural parts with controlled weld quality, flatness, surface condition and packing.

# A WIDE RANGE OF MATERIALS AND FINISHES

- **SUS304 / stainless steel**  
Shafts, rings, pulleys, flanges, polished #400 stainless parts and welded assemblies requiring stable surface quality.
- **SS400 / carbon steel**  
Machining, structural welding, plating, black oxide surface treatment and drawing-based products.
- **Anodized aluminum / FC25 cation coating**  
Parts requiring light weight, attractive surfaces or corrosion-resistant finishing.
- **Brass and special materials**  
We review drawing-based requirements and advise suitable machining methods.



# QUALITY CONTROL FROM DRAWING TO DELIVERY

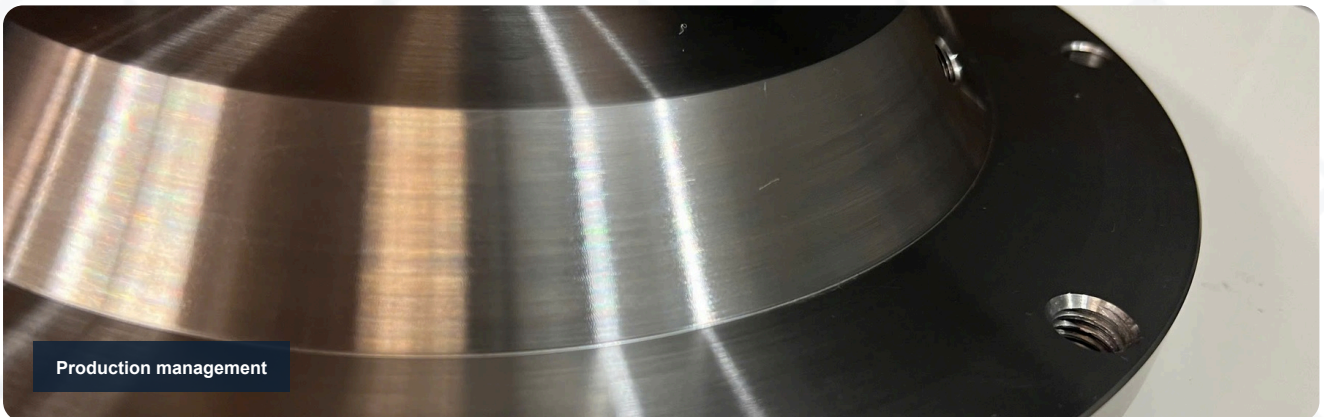


2D optical dimension measurement

- Drawing-based inspection**  
Dimensions, technical requirements and surface conditions are checked before delivery.
- Inspection equipment**  
3D CMM and 2D optical dimension measuring machine support dimension and position checks.
- Clear delivery documentation**  
Quotation documents, delivery documents and quality checklists are standardized for each order.

# A TRANSPARENT 6-STEP WORKFLOW

- 1 Requirement review**  
Managed as one process from drawing review to delivery.
- 2 Quick quotation**  
Managed as one process from drawing review to delivery.
- 3 Order confirmation**  
Managed as one process from drawing review to delivery.
- 4 Production management**  
Managed as one process from drawing review to delivery.
- 5 Quality inspection**  
Managed as one process from drawing review to delivery.
- 6 Delivery**  
Managed as one process from drawing review to delivery.



# WHY CUSTOMERS CHOOSE SHINTECH PRECISION



- Understanding Japanese customer requirements**  
Experience with strict technical standards and high quality expectations.
- Flexible machining network**  
We connect each project with suitable manufacturers by material, process, quantity and schedule.
- Single-point coordination**  
Customers work with one point of contact for quotation, production, QC and delivery.



12 / CONTACT

# SEND TECHNICAL DRAWINGS TO RECEIVE A QUOTATION

ShinTech Precision Vietnam is ready to receive machining requests, advise production methods and support quality control for each order.

---

**PHONE**

+84 963 550 655

Hoang Van Minh - Managing Director

---

**EMAIL**

[info@shintechprecision.com](mailto:info@shintechprecision.com)

[hv.minh@shintechprecision.com](mailto:hv.minh@shintechprecision.com)

---

**ADDRESS**

No. 12, Alley 101/1 Gia Thuong Street, Viet Hung Ward, Long Bien District, Hanoi, Vietnam

---

**WEBSITE**

[shintechprecision.com](http://shintechprecision.com)